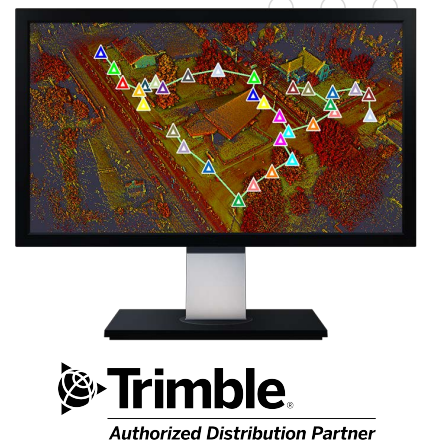


Scanning with Trimble Equipment and TBC

Course Description: This course is designed as a scanning field to finish using Trimble field and Trimble Business Center. The class is designed for intermediate users of both field and office software. During this class students will spend the morning learning how to use the SX12 scanning total station with Trimble Access and Trimble's X series of scanners with Trimble Perspective. In the afternoon students will then learn how to work with scan data inside Trimble Business Centers Scanning Module

Topics Include:

- Trimble Access Scanning
- Trimble Perspective
- Trimble X9
- Registering Scans in TBC
- Line Extraction in TBC
- Creating Deliverables in TBC
- Trimble SX12
- Trimble X7
- Trimble X12
- Classifying Regions in TBC
- Feature Extraction in TBC



Prerequisite: Student must have a laptop with current version of TBC installed

Course Date: December 14th, 2023 - Thursday

Course Location: Metropolitan Community College, Fort Omaha Campus, Omaha, NE - Bldg. 10

Contact: Scott Howe direct at 816-507-7814 or via email at showe@seilerinst.com

Limited equipment may be available for this course, but will need to coordinate with trainer prior to class.

Lunch is included in the class registration.

Course Fee: \$400 per person. MC, Visa accepted- Pay Online

Registration Link: <https://www.seilergeo.com/events/>

Instructors: Scott Howe, Levi Shinn